

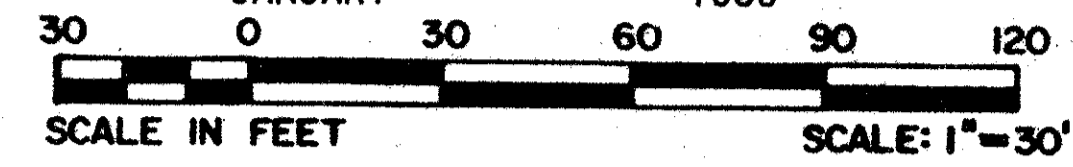
54/63

TRACT 42 - B OF WELLINGTON P.U.D.

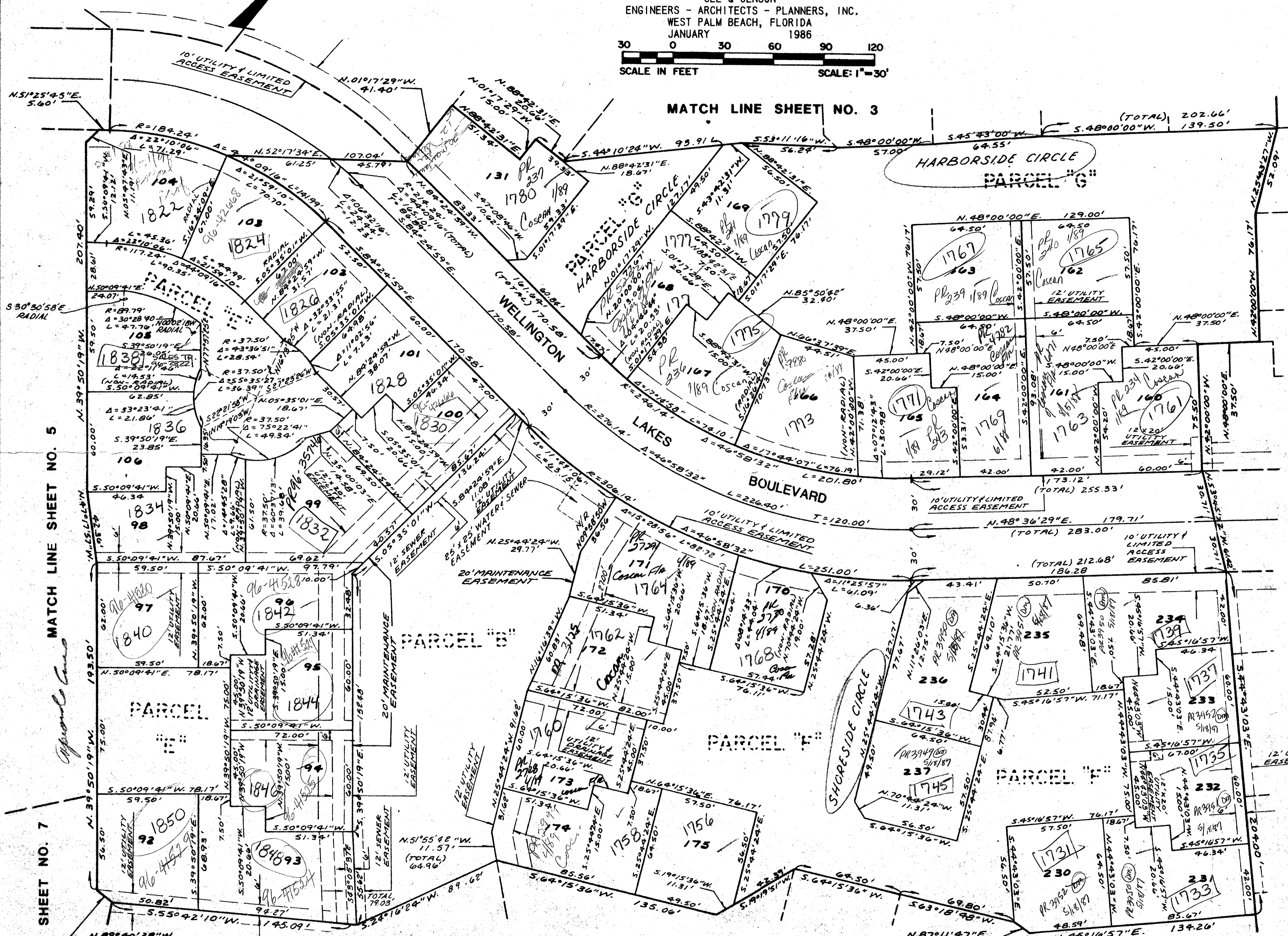
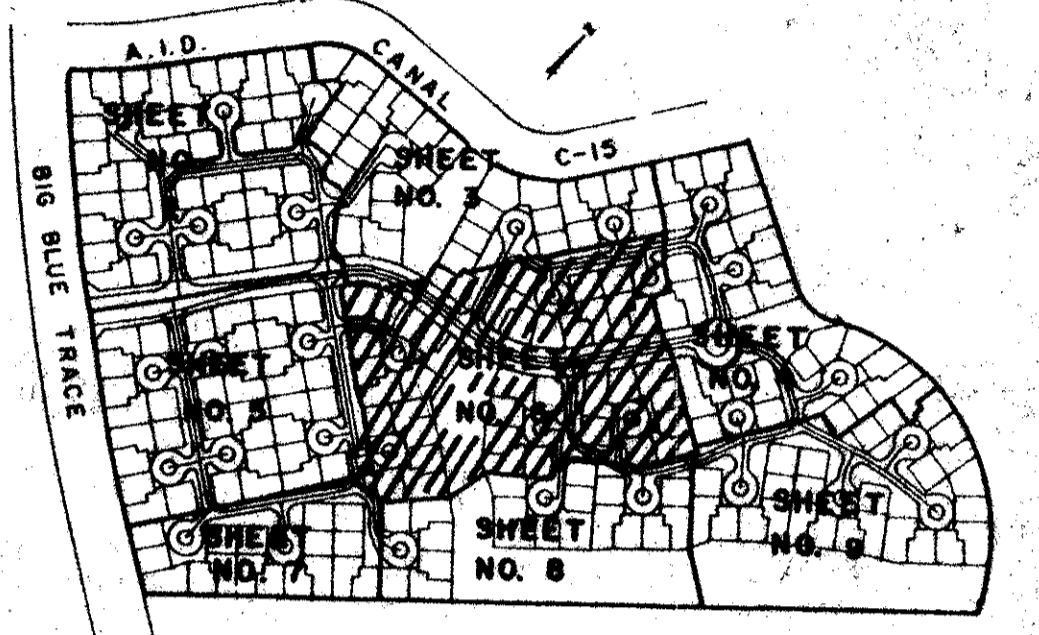
IN PART OF SECTION 10, TOWNSHIP 44 SOUTH, RANGE 41 EAST
PALM BEACH COUNTY, FLORIDA
IN NINE SHEETS SHEET NO. 6

63

GEE & JENSON
ENGINEERS - ARCHITECTS - PLANNERS, INC.
WEST PALM BEACH, FLORIDA
JANUARY 1986



STATE OF FLORIDA
COUNTY OF PALM BEACH
This plat was filed for
record at _____ M. this _____ day
of _____ 1986, and duly
recorded in Plat Book No. _____
on Pages _____ thru _____
JOHN B. DUNKLE
Clerk Circuit Court
By: _____ D.C.



Subdivision * Wellington
BOOK 54 PAGE 63
FLOOD ZONE A FLOOD INSURANCE #1009
QUAD # 62 ZONING
SE ZIP CODE 33414
PUD NAME, Tract 42-B

54/63
0332-063

APPROVED BY: [Signature]
CHECKED BY: [Signature]

TRACT 42-B OF WELLINGTON P.U.D.

DRAWING NUMBER

DRAWING NUMBER

DRAWING NUMBER

PLAN HOLD CORPORATION - IRVINE, CALIFORNIA
REGISTERED PROFESSIONAL ENGINEER - SURVEYOR
REGISTERED PROFESSIONAL ARCHITECT - PLANNER
REGISTERED PROFESSIONAL LANDSCAPE ARCHITECT